

# Openfind™

## MAILBASE Mail Archive and Management System

### Product Introduction

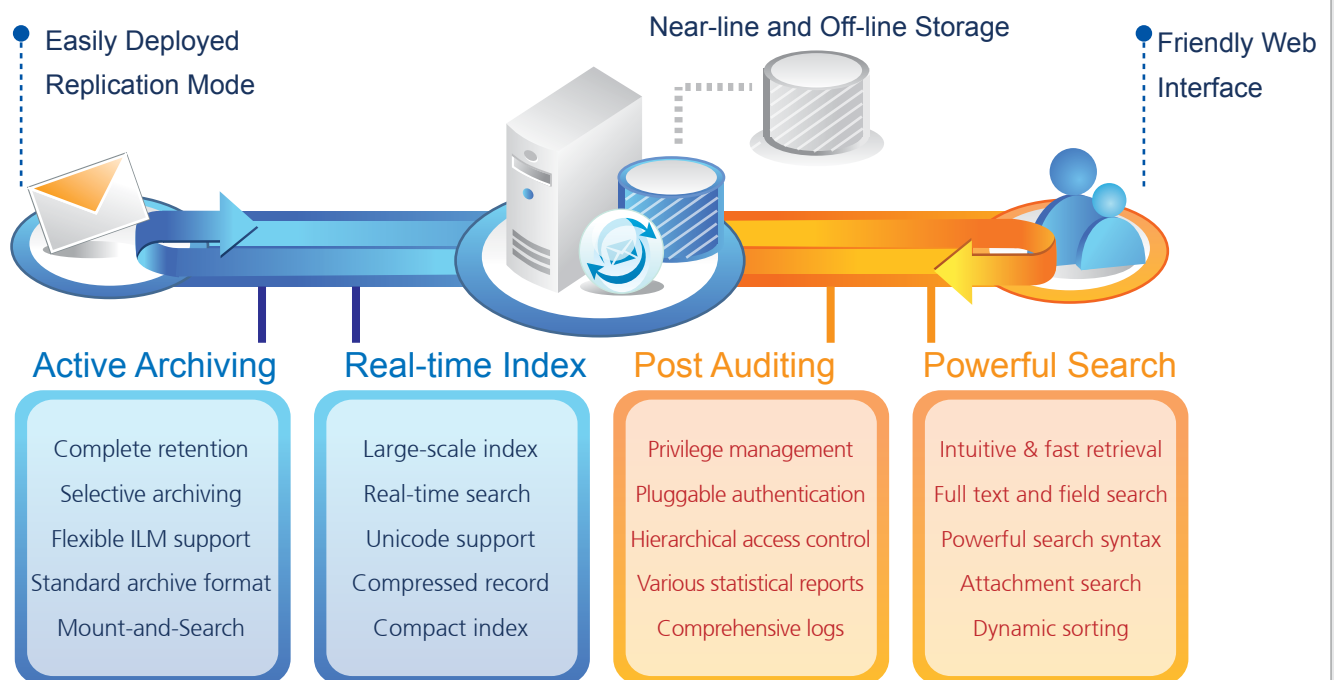
#### The Best Choice to Comply Enterprise Email Regulations

Email has been widely adopted by worldwide enterprises as an important business communication tool; consequently, a great deal of enterprise knowledge is stored in the messaging system. However, according to a survey from Japan, up to 70% of corporate information leakage is from within, indicating that most enterprises encounter problems with managing information orderly and effectively.

Since the Sarbanes-Oxley Act was drawn up in the U.S. in 2002, requesting enterprises to maintain all electronic files and email for at least five years, many countries have started paying serious attention to email archiving, auditing and management, and urge the relevant policies to be carried out.

Utilizing the self-developed messaging system and its powerful search engine, administrators, via MailBase's friendly web-based interface, can archive all inbound, outbound and local-to-local messages to achieve complete retention. The powerful and large-scale search engine allows full-text, multi-field and attachment search, enabling users to retrieve information instantly and accurately.

### Product Features



## Product Benefits

### Flexible Mail Archive and Management

Assisting enterprises to enforce the information lifecycle management (ILM) policy, MailBase is designed to optimize email storage, reduce the total cost of ownership (TCO) and enhance the retrieval performance.

### Real-time and Powerful Search

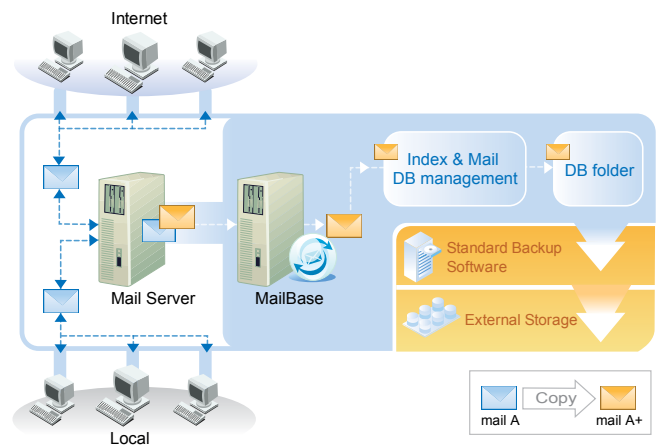
New incoming mails can be searched immediately through friendly web-based interface. Users may search multiple fields such as "From", "Subject", "Message Contents" and specific flags to retrieve information. Moreover, attachments and full-text can be archived directly to raise enterprise productivity.

### Privilege Control and Complete Logs

Except for group management, MailBase also supports to integrate with various account authentication systems, such as LDAP, AD, Lotus Notes/Domino, POP3 and Mail2000. MailBase also records the keywords and time of every search performed by the user to ensure system security.

## System Overview

Unlike the common integrated gateway that can only retain inbound/outbound emails, MailBase's direct replication architecture can thoroughly retain local-to-local messages, too. Independent from the mail server, MailBase is not only free from multilayer delivery problems, but also possesses the stability of original mail transmission process. With the state-of-art functionalities, MailBase ensures that all email can be completely retained regardless of any user deletions or movements.



### System Requirements

#### Recommended Specification

CPU: Intel Pentium4 2.0GHz or above  
 RAM: 1GB or above  
 Storage: Daily mail traffic \* Days of server retention \* 2 (estimation)  
 Operating System: Linux and FreeBSD

#### Administrator and Client Side:

Microsoft Internet Explorer 6.0 or above  
 Mozilla FireFox 1.02 or above