

## Mail Archive and Management System

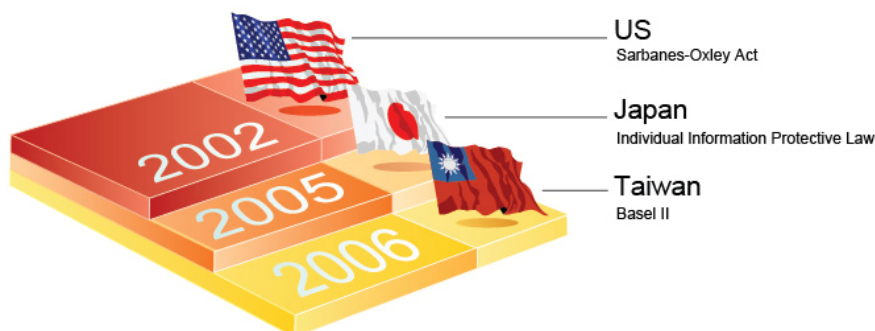
### Product White Paper

#### Regulatory Compliance

##### Greater Emphasis of Information Security Regulations Placed on Emails

Email has been widely adopted by worldwide enterprises as an important business communication tool; consequently, a great deal of enterprise knowledge is stored in the messaging system. However, according to a survey from Japan, up to 70% of corporate information leakage is from within, indicating that most enterprises encounter problems with managing information orderly and effectively. Therefore, email security management has become an important chapter for law regulations in all countries.

Since the Sarbanes-Oxley Act was drawn up in the U.S. in 2002, requesting enterprises to maintain all electronic files and email for at least five years, many countries have started paying serious attention to email archiving, auditing and management, and urge the relevant policies to be carried out. Japan, likewise, passed the "Individual Information Protection Law" in April, 2005 and is expected to deliver its own version of the "Sarbanes-Oxley Act" in 2008. Taiwan is expected to follow suit. The Ministry of Finance stated earlier that "Basel II" will be implemented in 2006 to regulate the financial industry. The new regulation enforces the establishment of enterprise information archive and electronic discovery mechanism, a step that enterprises must urgently perform to enhance information archiving, audit, and management.



## Product Introduction

### The Best Choice to Comply Enterprise Email Regulations

Openfind, with self-developed technologies in mail systems and search engines, provides the best choice for enterprises to meet the security regulations and laws. Utilizing the self-developed kernel of Openfind Mail2000 messaging system and its powerful search engine, administrators, via MailBase's friendly web-based interface, can archive all inbound, outbound and local-to-local messages to achieve complete retention in compressed format. Furthermore, the exclusive real-time index technology from Openfind allows users to search any mail by full text, multi-field, or attachments according to users' privileges, enabling users to retrieve information instantly and accurately. With the implementation of MailBase, enterprises may easily perform functions such as mail archive and management, audit, search, and retrieve. In combination with the planning of Information Lifecycle Management, enterprises may achieve cost-effective strategy for email active-archiving.

## Benefits

Not only does MailBase archive your enterprise knowledge assets, it extends the value of them.

### **No More Complicated Email Management**

Endless exporting, importing, renaming, and indexing can become a tedious task for email archiving. With MailBase, you no longer have to perform any email archive management on your own. In addition, MailBase provides a simple and easy-to-use web interface for retrieving emails in the quickest manner.

### **Completely and Rapidly Archive Emails**

Typical products in the market employ gateway architecture which is not able to completely preserve local-to-local mails for archive. MailBase uses replication mode, an architecture that copies emails directly. Compare to the gateway mode, the multilayered mail transfer can be simplified, so that the system performance will not be compromised.

### **Easy-to-Use Search Interface**

MailBase is implemented with a convenient web interface that provides administrators with a complete set of query options for full text, multi-field, and attachment search. Archived emails can be retrieved easily for audit and management purposes.

### **Easy Off-line Archiving without Database License Purchase**

Many similar products use databases to store emails. Under which, administrators must thoroughly tune the performance of the large-scale database and think over the considerable license fees for commercial database software. MailBase, on the other hand, integrates the large-scale search engine technology developed by Openfind. Its core technology enables administrators to copy data to various types of media; thus, avoiding complicated and risky database issues.

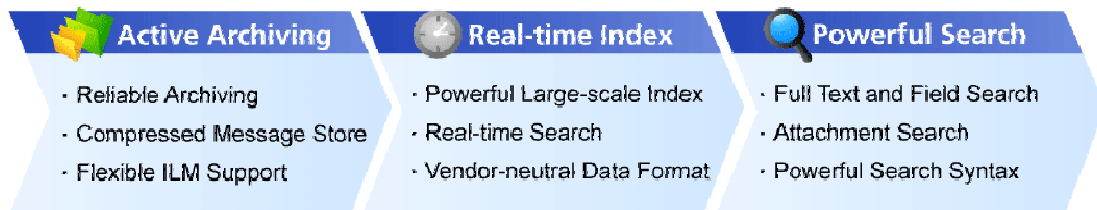
### **Easily perform Email Lifecycle Management**

With the exclusive MailBase repository mounting and unmounting functions, Email Lifecycle Management can be achieved since administrators may partition emails into different repositories over a preset period of time. Archiving is done with on-line storage, near-line storage, and off-line storage.

### **Safely Control Search Privilege and Records**

MailBase search privilege can be integrated (optional modules) with various "Directory Services" (such as LDAP and Active Directory), effectively control the user privileges and the group configuration. In addition, the system will record the keywords and time of every search performed by the user to ensure system security.

#### **MailBase Features**



## Product Features

Complete Archiving, Rapid Search, Flexible Storage, Easy to Use

### Complete Email Retention

Unlike the common integrated gateway that can only retain inbound and outbound emails, the efficient email replication architecture of MailBase can thoroughly retain local-to-local emails, too. Independent from the mail server, MailBase is not only free from the problem of multilayer delivery, but it also possesses the stability of original mail transmission process.

### Flexible Mail Archive and Management

To comply with various standard compliances worldwide, enterprises have to retain emails for years. However, of the massive volume of archived emails, often only a fraction can be stored into an expensive on-line storage. To solve this problem, MailBase presents the unique “mount” and “unmount” functions that simply follow the Information Lifecycle Management (ILM) policy of enterprises. The system automatically rotates the repository at regular intervals, helping the IT department to deploy on-line, near-line and off-line storage.

### File-base Structure for Simple Off-line Archiving

MailBase is able to archive emails within a defined period of time into a complete repository. Since the directory that contains the archived emails consists of all the information required by the Openfind search engine such as index file, meta-data, and original record, the administrators are simply required to back up the directory to external media to go off-line.

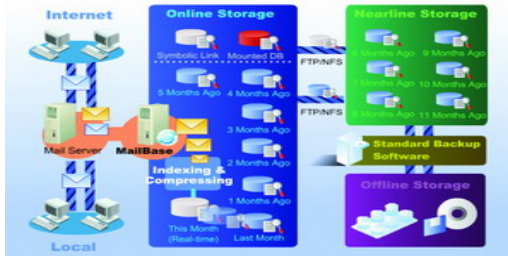
### Real-time, Large-scale Search

The real-time search ability of MailBase enables users to execute immediate search for new messages with much higher efficiency than the traditional database SQL command. New incoming mails can be searched easily with the web interface as soon as the user logs in to the MailBase system. In comparison with the SQL performance in other products, MailBase provides a more efficient search experience.

### Powerful Search Functions and Attachment Retrieve

The friendly web-based interface offers complete search features. Users may search

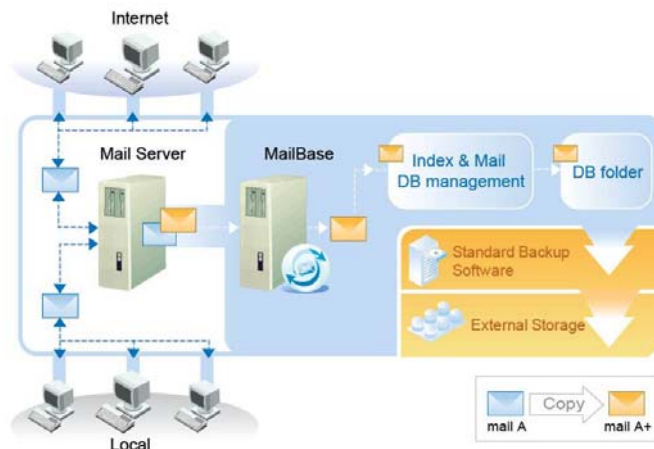
multiple fields such as “From”, “Subject”, “Message Contents” and specific flags to retrieve information with precision. Moreover, attachments can be searched as well. MailBase also supports full-text search for attachments of different file formats.



## System Infrastructure

Integrates Existing System with Ease, Provides Flexible Archiving and Auditing

MailBase uses the direct replication mode that is easy to deploy and does not interfere the existing mail system. All the archived mails along with attachments are included in the repository with the large-scale real-time index. New mails can be searched immediately while retrieve and auditing tasks can be executed fully and effectively. The directory in which MailBase stores the archived mails has a simple file-based structure which can be copied to external media. These system features enable flexible and diversified Mail Lifecycle Management.



## System Requirements

Recommended Specification
CPU: Pentium4 2.0GHz or above Memory: 1GB or above Storage: Daily mail traffic * Days of server retention time * 2 (estimation) Operating System: <ul style="list-style-type: none"><li>● RedHat Enterprise Linux AS/ES, RedHat Linux 9.x and Fedora Core 1,2,3,4</li><li>● FreeBSD: 4.x (4.4 or above), 5.0 and 5.1</li></ul>
Administrator and Client Side: (Browser Version)
Microsoft Internet Explorer 5.x or above FireFox 1.02 or above